

DRAWING NUMBER  
44/166

DRAWING NUMBER

DRAWING NUMBER

DRAWING NUMBER

# CONCEPT HOMES OF LANTANA PHASE 9-A

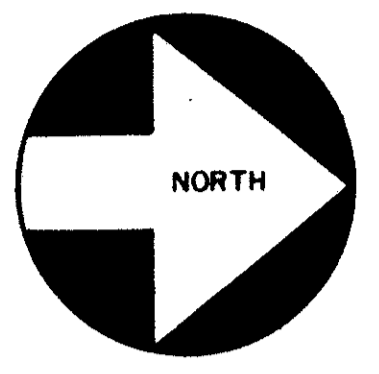
BEING A PARCEL OF LAND LYING IN THE SOUTHWEST ONE-QUARTER OF SECTION 1,  
TOWNSHIP 45 SOUTH, RANGE 42 EAST, PALM BEACH COUNTY, FLORIDA.

JANUARY, 1982

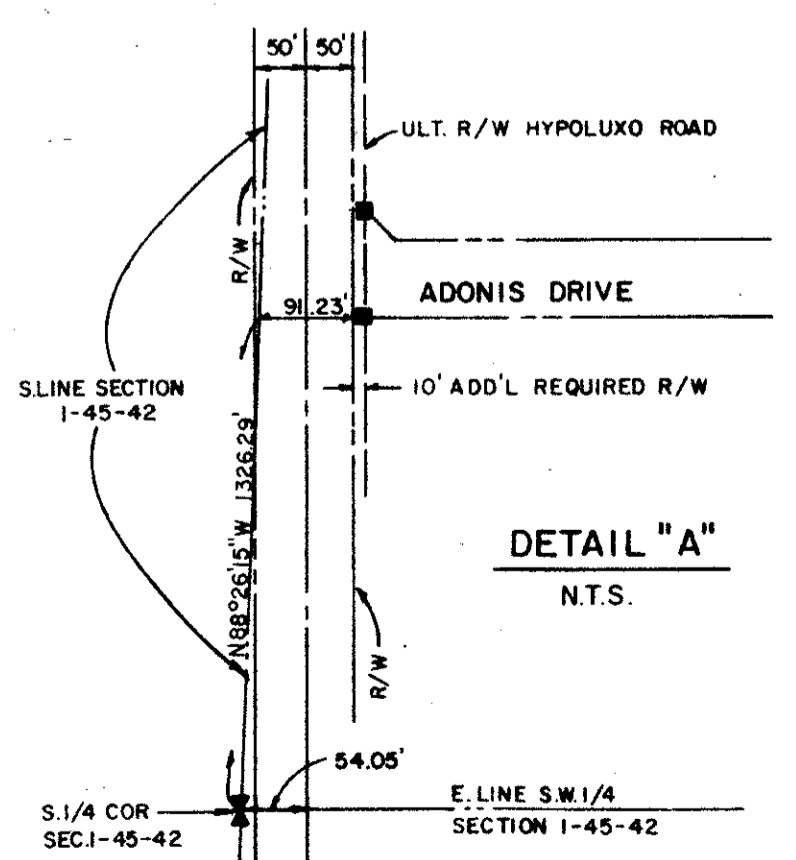
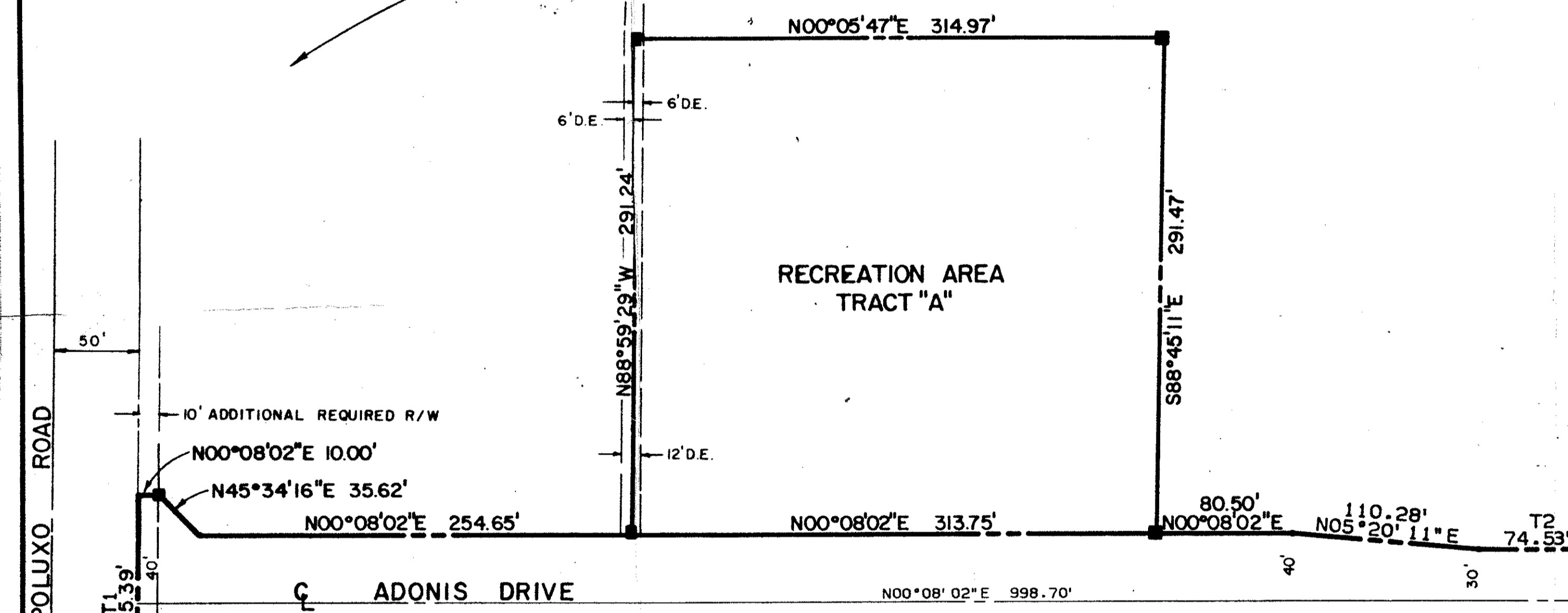
SHEET 2 OF 2

# 166

STATE OF FLORIDA  
COUNTY OF PALM BEACH  
THIS PLAT WAS FILED FOR  
RECORD AT  
THIS DAY OF  
AD, 1982 AND DULY RECORDED  
IN PLAT BOOK ON PAGES  
AND  
JOHN B. DUNKLE, CLERK  
CIRCUIT COURT  
BY: DC.

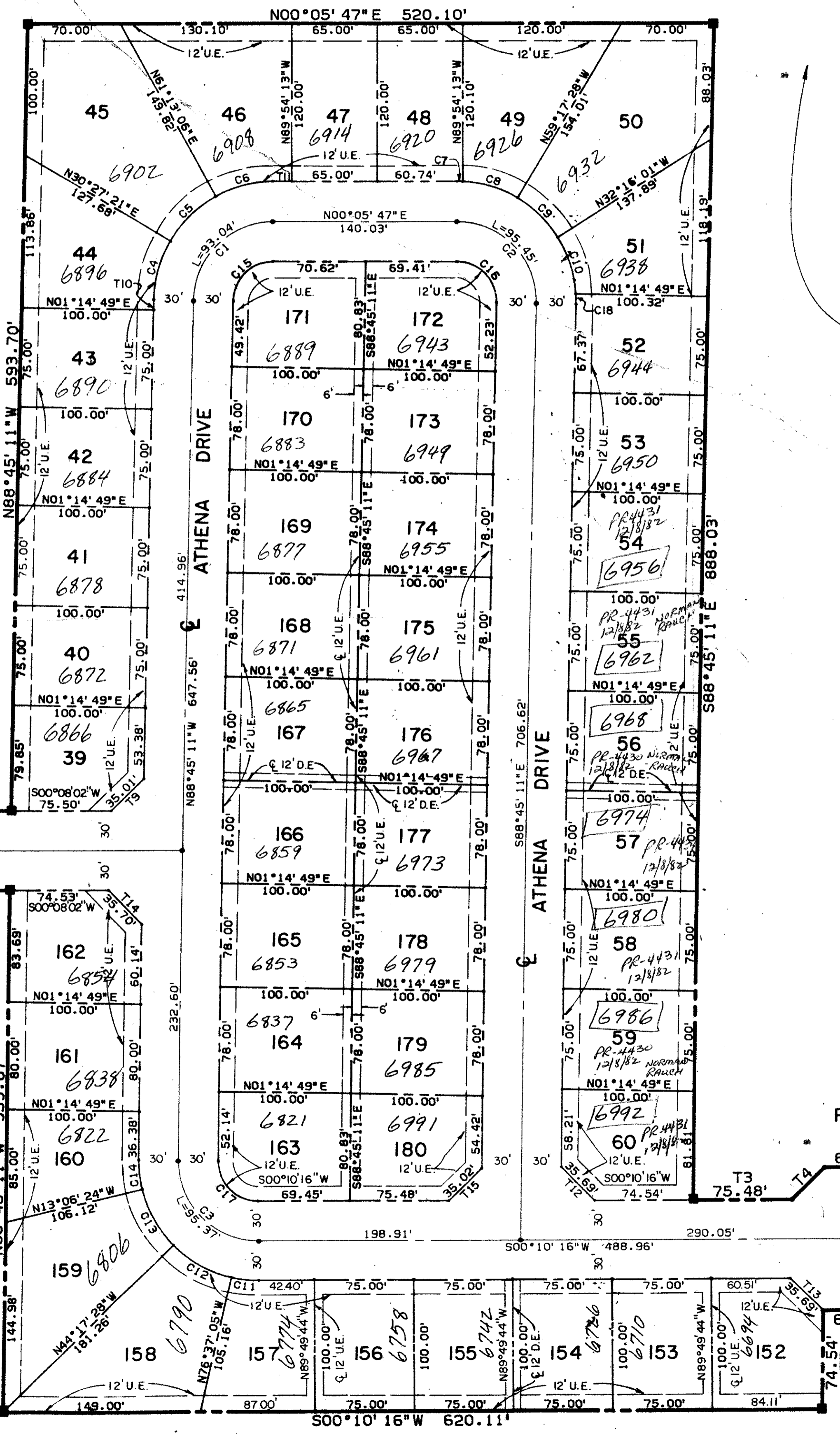


0 20 40 60 80 100 120  
SCALE IN FEET  
1" = 60'



NO	DELTA	RADIUS	LENGTH
C1	88°50' 58"	60.00	93.04
C2	91°02' 02"	60.00	95.45
C3	91°04' 34"	60.00	95.37
C4	23°12' 32"	90.00	45.88
C5	35°45' 45"	90.00	48.32
C6	28°52' 40"	90.00	45.36
C7	2°42' 38"	90.00	4.26
C8	27°54' 07"	90.00	43.83
C9	27°01' 27"	90.00	42.45
C10	28°38' 58"	90.00	45.00
C11	13°12' 38"	90.00	20.75
C12	32°15' 38"	90.00	50.78
C13	31°11' 04"	90.00	48.98
C14	14°21' 13"	90.00	22.55
C15	88°50' 58"	30.00	46.52
C16	91°02' 02"	30.00	47.73
C17	91°04' 34"	30.00	47.68
C18	4°51' 54"	90.00	7.64

NO	BEARING	DISTANCE
T1	N88°59' 29"W	105.39
T2	N00°08' 02"E	74.53
T3	N00°10' 16"E	75.48
T4	N44°17' 28"W	35.02
T5	N00°43' 30"W	60.04
T6	S00°43' 30"E	60.04
T7	S88°45' 11"E	74.54
T8	S00°08' 02"W	75.50
T9	N44°18' 35"W	35.01
T10	N88°45' 11"W	7.63
T11	N00°05' 47"E	14.28
T12	N45°42' 32"E	35.69
T13	S45°42' 32"W	35.69
T14	S45°41' 25"W	35.70
T15	S44°17' 28"E	35.02



0223-304  
WATER MANAGEMENT TRACT

34  
I-6

CONCEPT HOMES OF LANTANA  
PHASE 9  
PLS 43, P68, 708, 80

1/45/42

Meridian Surveying and mapping inc.  
WEST PALM BEACH, FLORIDA

DRAWN	M.E.H.	DATE	JANUARY 1982
CHECKED		SCALE	1" = 60'
DRAWING NO.	79-P-153	CONCEPT HOMES OF LANTANA PHASE 9-A	